



B1923 Reinforcing Pivots

Markar Architectural Products, Inc. a subsidiary of Adams Rite Manufacturing Co.
68 Ward Road, Lancaster, NY 14086 * 800-866-1688 * 716-685-4104 * 716-685-3919 fax * www.markar.com

STANDARD FEATURES

Type

Full surface reinforcing pivot for flush doors

Material

Heavy-duty 3/16" thick (.187) 1012 cold-rolled steel

Finish

US2G Galvanized zinc plating

Cycle Testing

1,500,000 repetitions
Exceeds ASTM standard 156.1

Mounting Hardware

Comes complete with all necessary fasteners
Optional tamper-proof screw available

Capacity

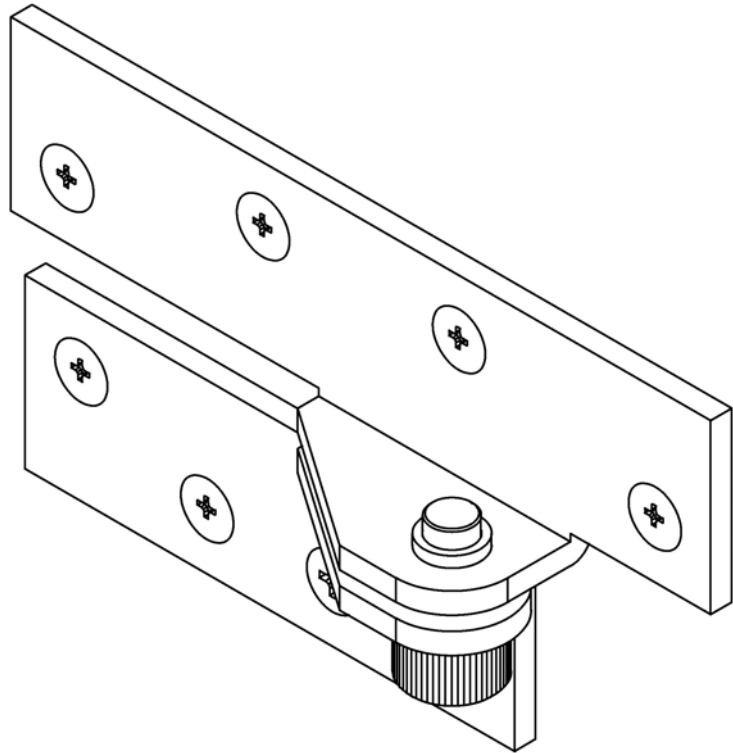
Supports weights up to 300lbs.

Hole Pattern

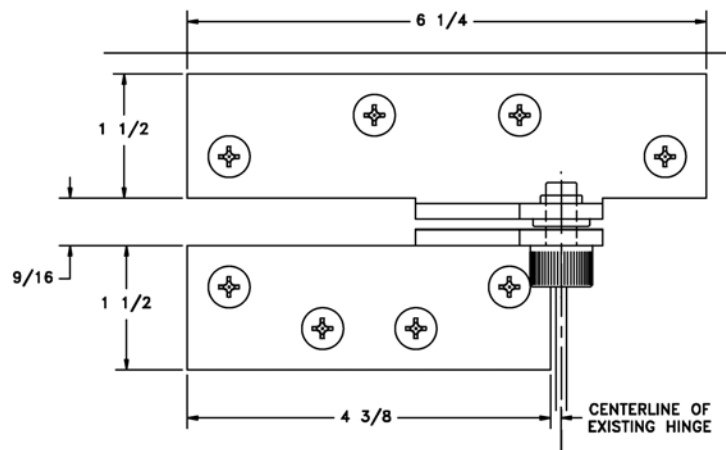
Symmetrically located
Specify hand when ordering

Hinge Size

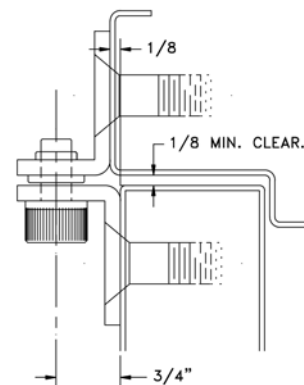
4 1/2" hinge
3/4" to center line of pivot



This full-surface reinforcing pivot adds years of life to openings where the hinges or hinge reinforcements have failed. Reinforcing pivots take the load off the top hinge and transfer it to screws that are in shear so they will not pull out. The economical way to solve door sag problems!



FRONT VIEW



SIDE VIEW